



# Shakespeare

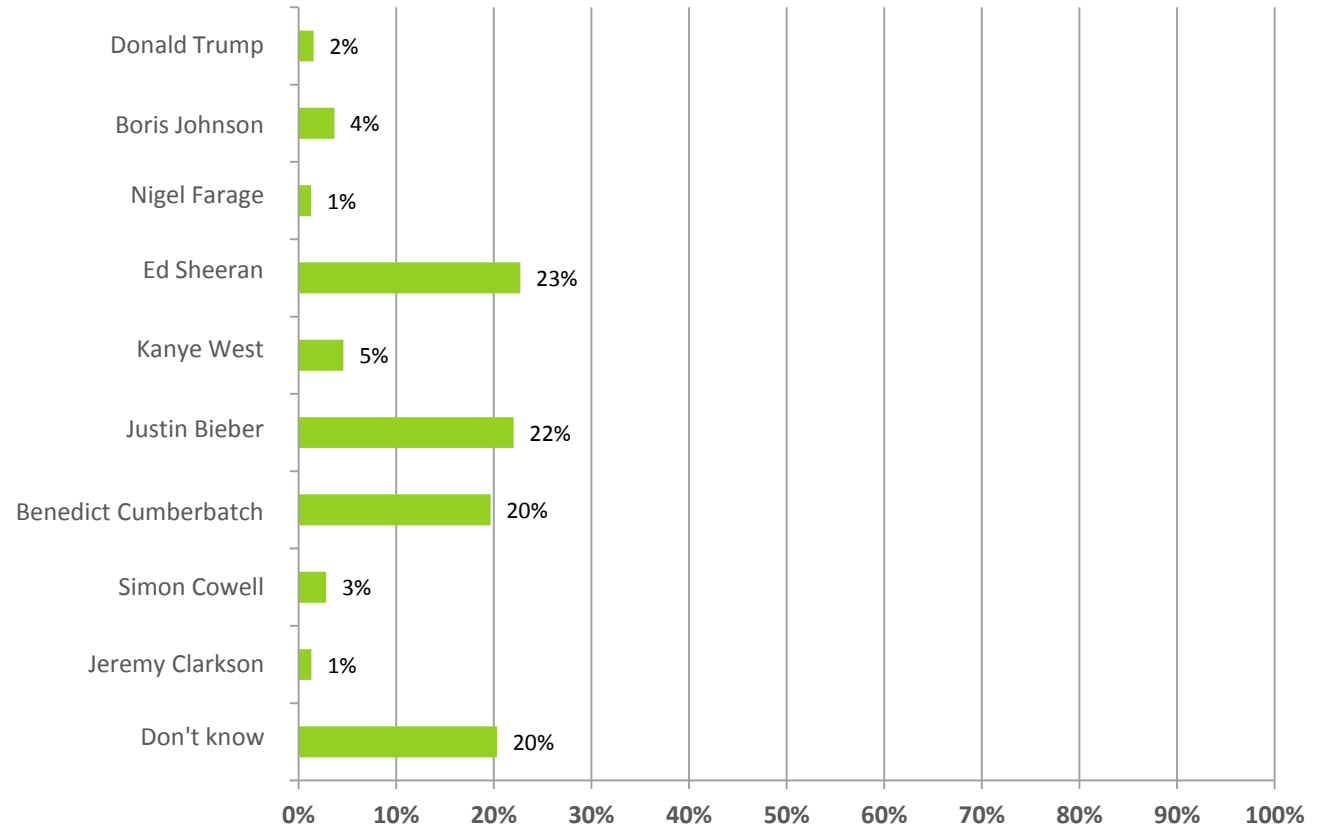
15th – 18th March 2016



# Romeo

yvs\_q1\_1. If you had to choose, which ONE, if any, of the following celebrities would you describe as the modern day equivalent of each of the following Shakespeare characters? –

*Romeo (falls in love with Juliet in the play Romeo and Juliet)*

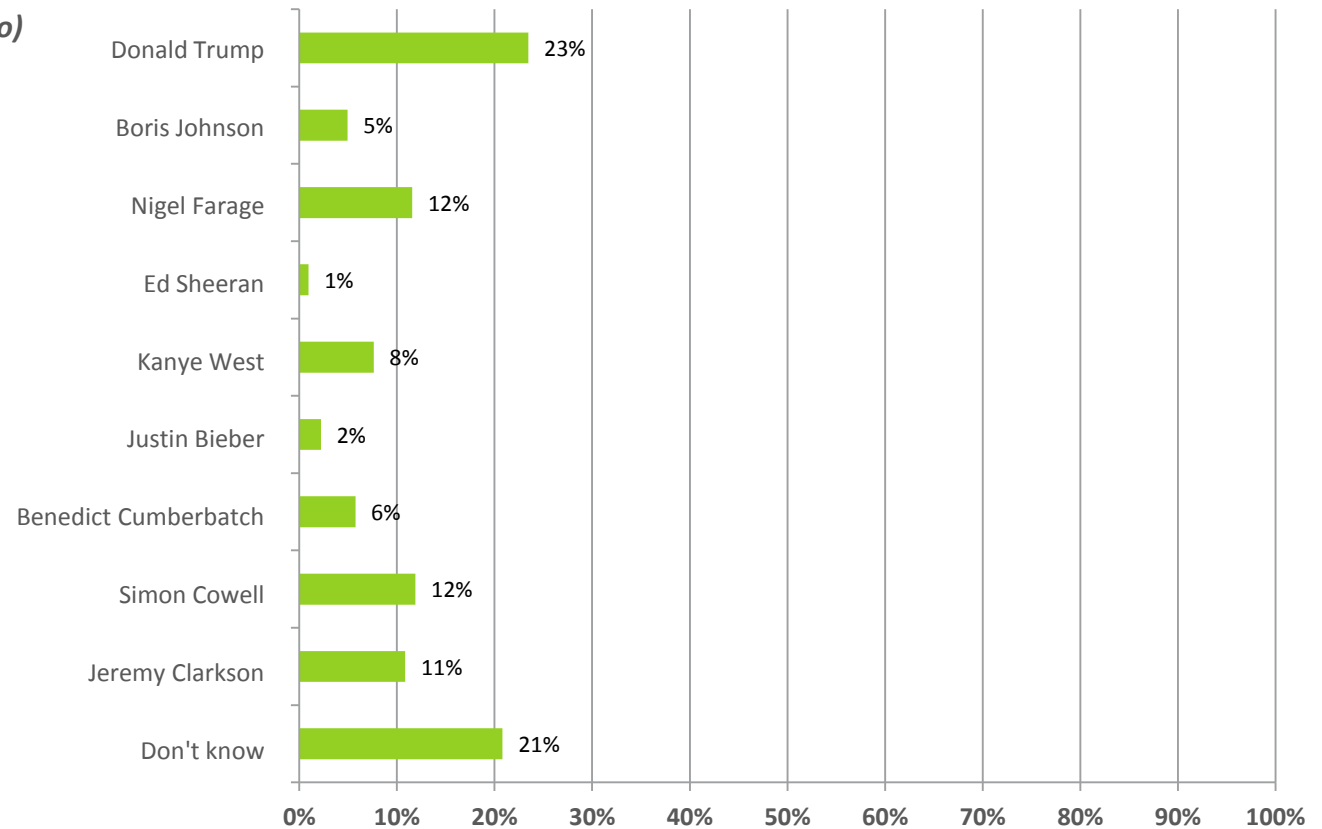


Unweighted base: All GB adults (2050)

# Iago

yvs\_q1\_2. If you had to choose, which ONE, if any, of the following celebrities would you describe as the modern day equivalent of each of the following Shakespeare characters? –

*Iago (the villain in the play Othello)*

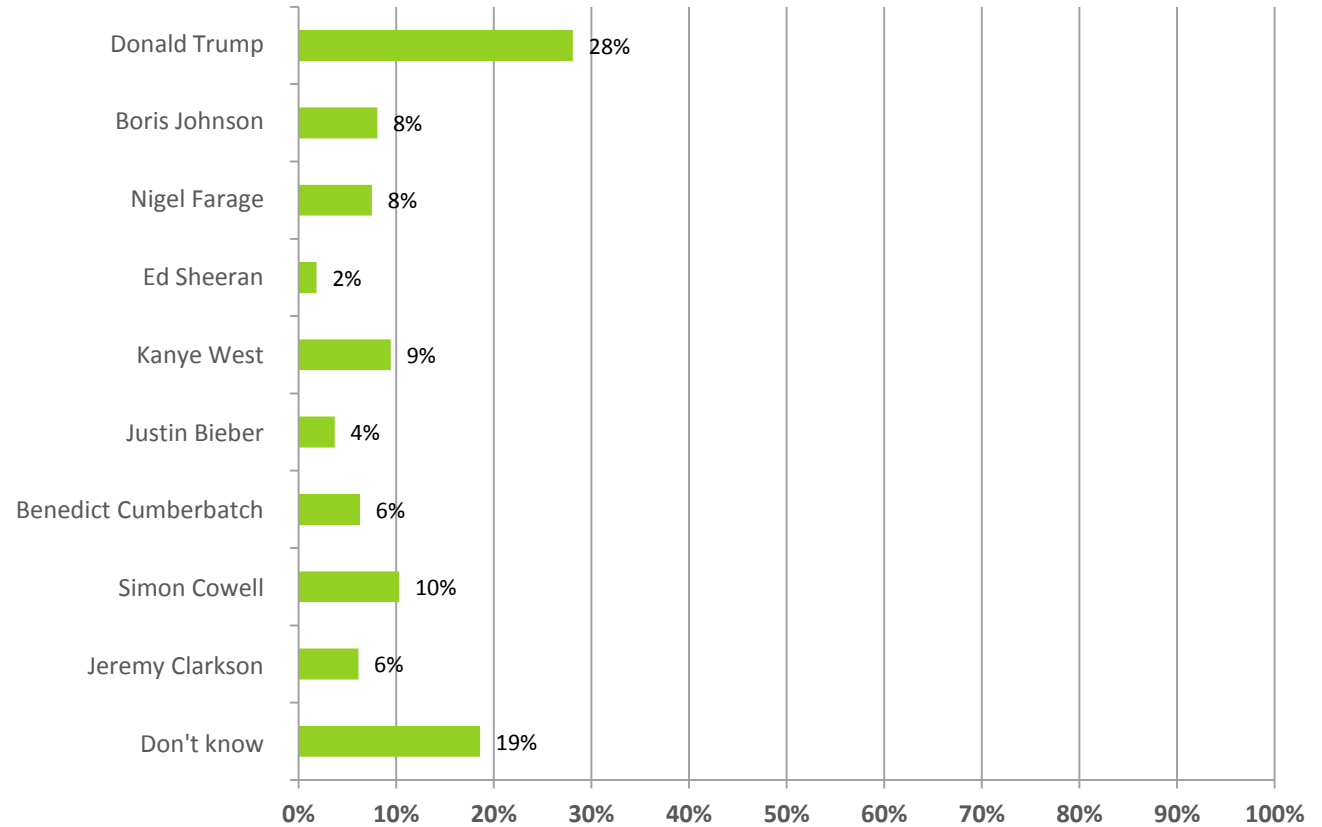


Unweighted base: All GB adults (2050)

# King Lear

yvs\_q1\_3. If you had to choose, which ONE, if any, of the following celebrities would you describe as the modern day equivalent of each of the following Shakespeare characters? –

*King Lear (the central character in the play King Lear, unable to see beyond false flattery his country descends into war)*

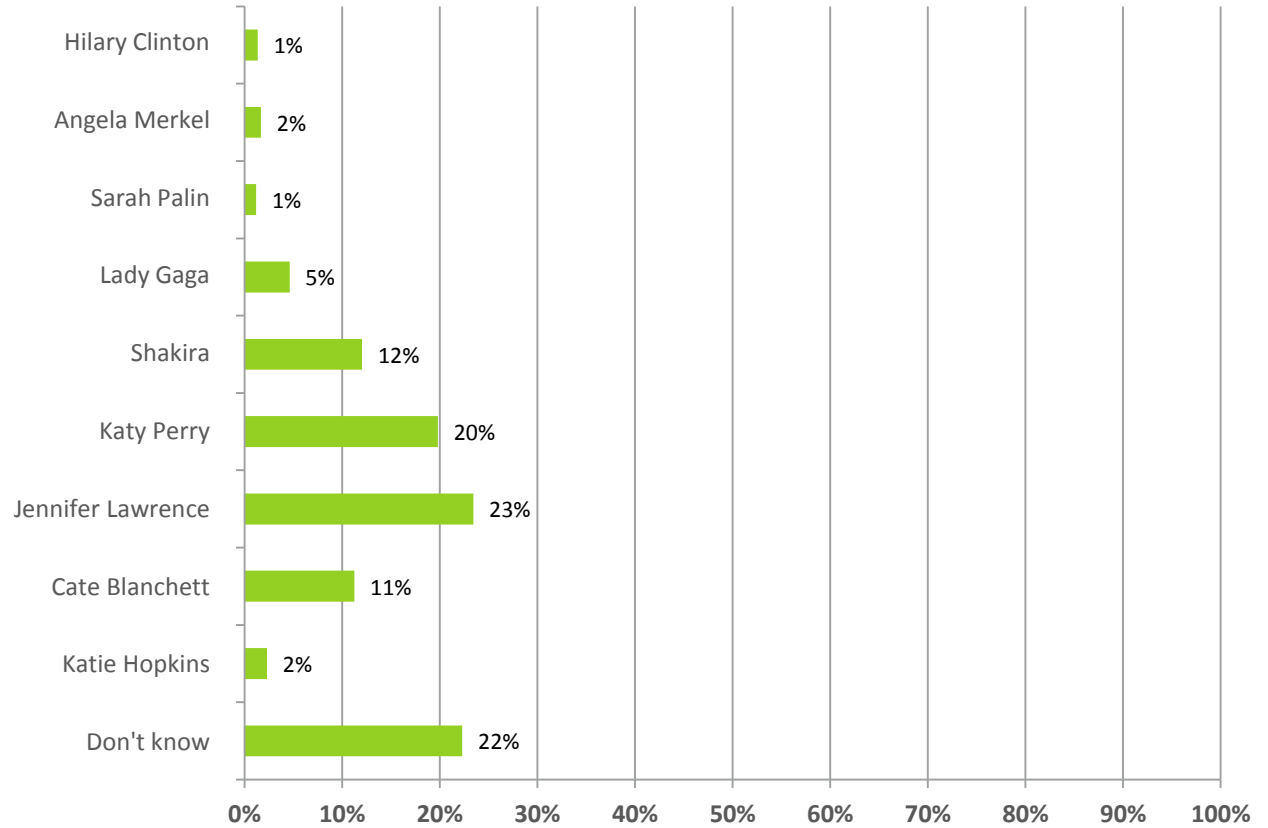


Unweighted base: All GB adults (2050)

# Juliet

yvs\_q2\_1. If you had to choose, which ONE, if any, of the following celebrities would you describe as the modern day equivalent of each of the following Shakespeare characters? –

*Juliet (falls in love with Romeo in the play Romeo and Juliet)*

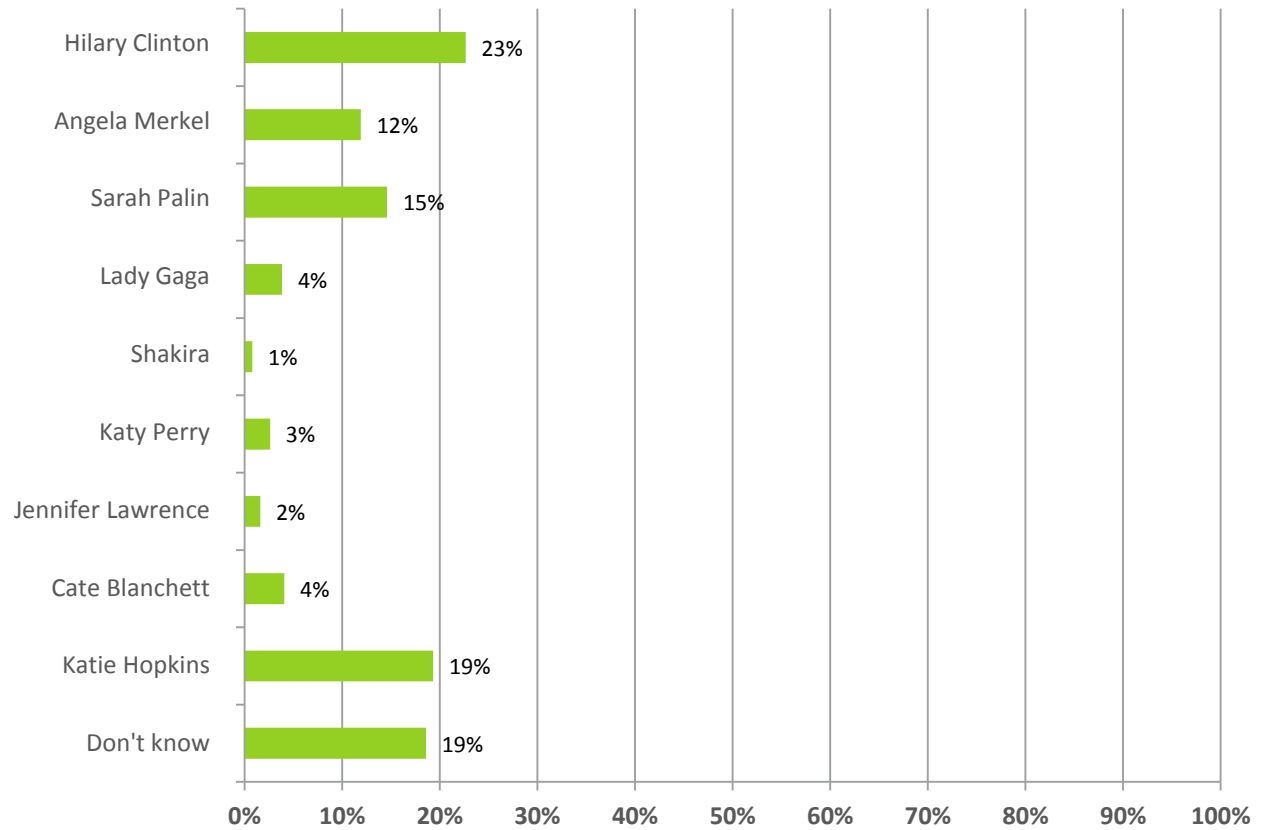


Unweighted base: All GB adults (2050)

# Lady Macbeth

yvs\_q2\_2. If you had to choose, which ONE, if any, of the following celebrities would you describe as the modern day equivalent of each of the following Shakespeare characters? –

*Lady Macbeth (to gain power she conspires with her husband to murder Duncan in the play Macbeth)*

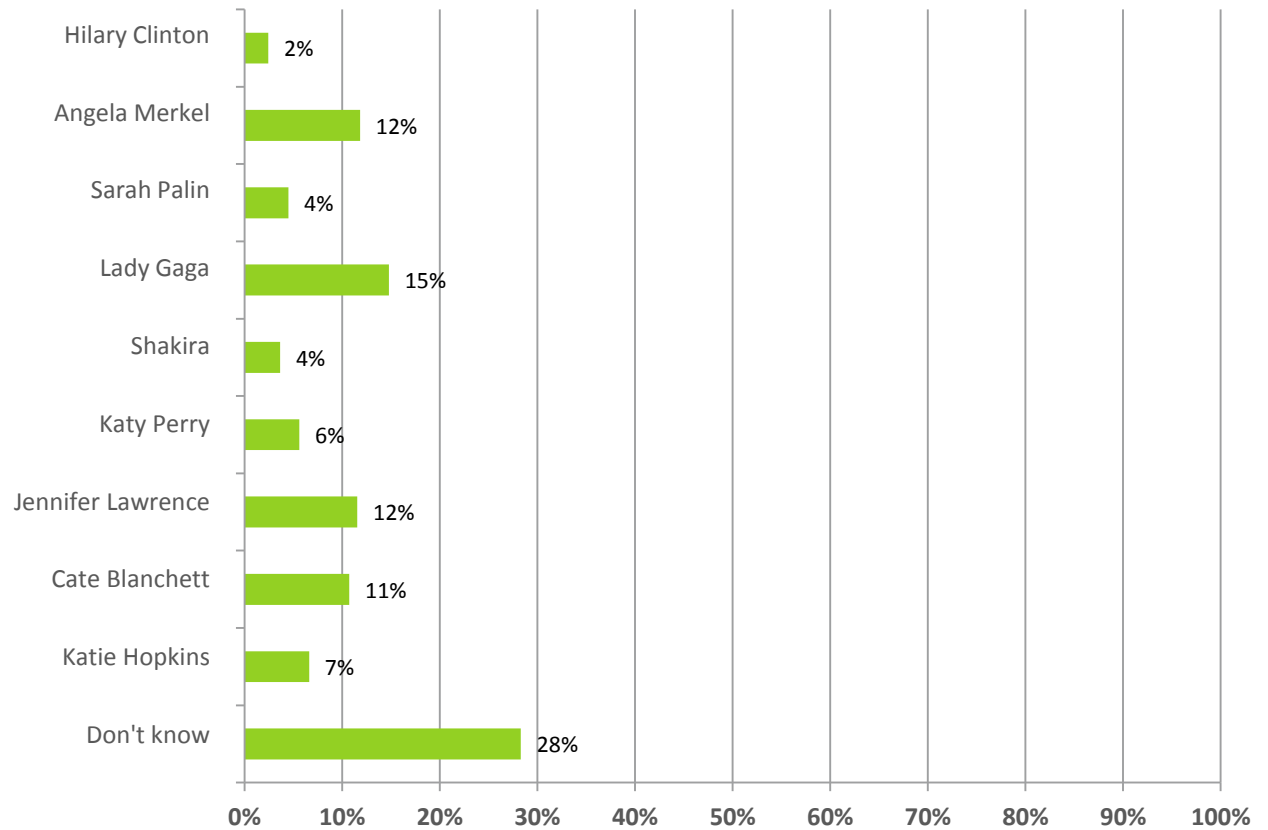


Unweighted base: All GB adults (2050)

# Rosalind

yvs\_q2\_3. If you had to choose, which ONE, if any, of the following celebrities would you describe as the modern day equivalent of each of the following Shakespeare characters?

Rosalind (the central character of *As You Like It*, she spends the bulk of the play in exile in the Forest of Arden disguised as a boy)



Unweighted base: All GB adults (2050)

# Custom research at YouGov

The charts in this presentation show your "headline" findings but did you know that we are able to do **so much more for you?!**

YouGov has **expert specialised research teams** who know **your industry** and **audiences** inside-out.

Our **sector specialists** (Consumer, Digital, Media and Technology, Financial Services, Public Services) combine research expertise with in-depth knowledge to help you identify and analyse your markets, as well as offer **actionable insight** on how to best achieve your business/organisation objectives

For more information, contact the Custom Research team on [customresearch@yougov.com](mailto:customresearch@yougov.com) or call +44 20 7012 6000

